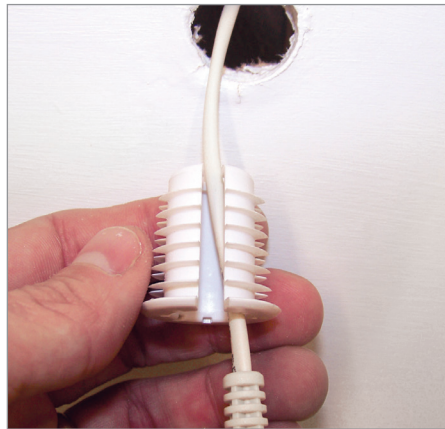
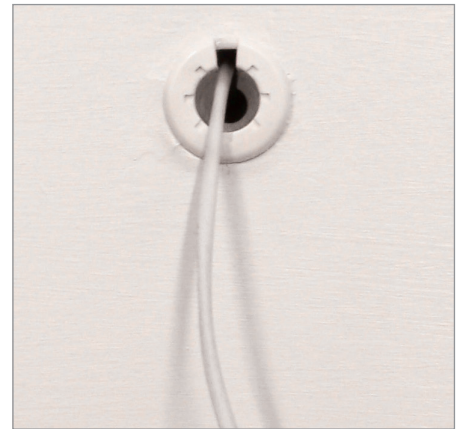


Model EB-SP1 Single Connector Finished Surface Interface (for connector termination in a wall or ceiling)

1. Drill a 7/8" dia. hole in the wall.
2. Drop connector thru the wall to room side.
3. Slide wiring into "Part B" through the slot opening along the side of the part. (Illustration A)
4. Push Part B into the wall opening until the flange is flush with the wall. (Illustration B)
5. Place the connector into Part A and locate the ribs so they are aligned with the slot in Part B. (Illustration C)
6. With connector pushed all the way into Part A, push Part A into the opening until it snaps into place. (Illustration D)



A



B



C



D