

# Model RT-150 Installation, Operation & Maintenance Instructions

Roto-Twist® cable actuated damper drive system.

---

Please read completely before installing this equipment.

## Receipt Inspection

Check material received against packing list. Claims resulting from factory errors must be made within 2 weeks after receipt of goods.

## Installation

(Reference illustrations on next page)

1. Round dampers are furnished as one piece; however, make sure cable end is secure in damper pivot coupling prior to installing.
2. Secure damper in position in duct. Screw or rivet into the U shaped bearing bracket from outside the duct - minimum of 1 screw per side. Preferred installation method is via #10 speed screws. Do not rack or distort damper. Dampers are ¼" undersized from nominal dimensions. Position damper to allow best cable run, avoiding tight turns, while keeping adjustment end in its preferred accessible position. Keep adjustment end of cable within 5" of accessible opening if possible. Alternately cables may be left hanging out of ceiling upon installation of air outlet and slipped back in after balancing.
3. Secure the adjustment end of the cable using the nylon clamp. The clamp may be positioned anywhere along cable length to keep adjustment end in accessible position. Do not over tighten. Cable should rotate easily inside the clamp.

## Operation

Dampers may be adjusted by using a MAT Square Nut driver or a ¼" hex nut driver to the male square adjustment end of the cable. Once set, dampers will hold their settings through the design velocity limits. MAT Square Nut Drivers with 5" shaft length may be purchased from the manufacturer. Optional screwdriver tip units are adjusted with a thin bladed screwdriver.

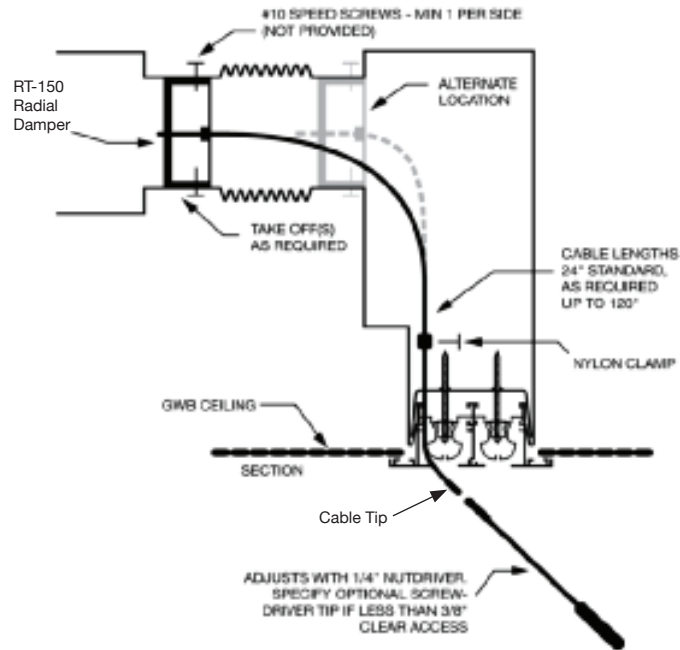
## Maintenance

Properly installed Roto-Twist® dampers require no maintenance of any kind.

# Model RT-150 Installation, Operation & Maintenance Instructions

Roto-Twist® cable actuated damper drive system.

## RT-150 Series As Installed Before Balancing



## RT-150 Series As Installed After Balancing

